

# GIORGI MAGHRADZE

Lighting design / Light art

"Lighting design is the sphere of my interest because it has a unique ability to affect the viewer and great potential to take flight in many directions as technology continues to advance. I am also intrigued by the nature of visible light that escapes from the physical boundaries of an art object, illuminating surrounding space with color and intensity."

[www.giorgimaghradze.com](http://www.giorgimaghradze.com)  
[www.linkedin.com/in/giorgi-maghradze-63bb93159/](https://www.linkedin.com/in/giorgi-maghradze-63bb93159/)

[maghradzegiorgi1@gmail.com](mailto:maghradzegiorgi1@gmail.com)  
+33 6 95596605

3-15 pp. Group projects  
2018 - present

16-28 pp. Personal projects  
2015 - present

29-37 pp. Projects at **Politecnico di Milano**  
2018

## Group projects

# PLACE D'ITALIE GRAND ÉCRAN (2019)

Exterior lighting for Grand Écran (Paris, France)

Lighting Project & concept by Agency 8'18" Lumière, Paris.  
Digital tools used: Photoshop.



# SAINT VINCENT DE PAUL (2019)

Urban lighting for Saint Vincent De Paul (Paris, France)

Lighting Project & concept by Agency 8'18" Lumière, Paris.  
Digital tools used: Photoshop, Autocad.





1. Accroche urbaine depuis Avenue Denfert-Rochereau.



2a. Accroche urbaine depuis rue Boissonade.



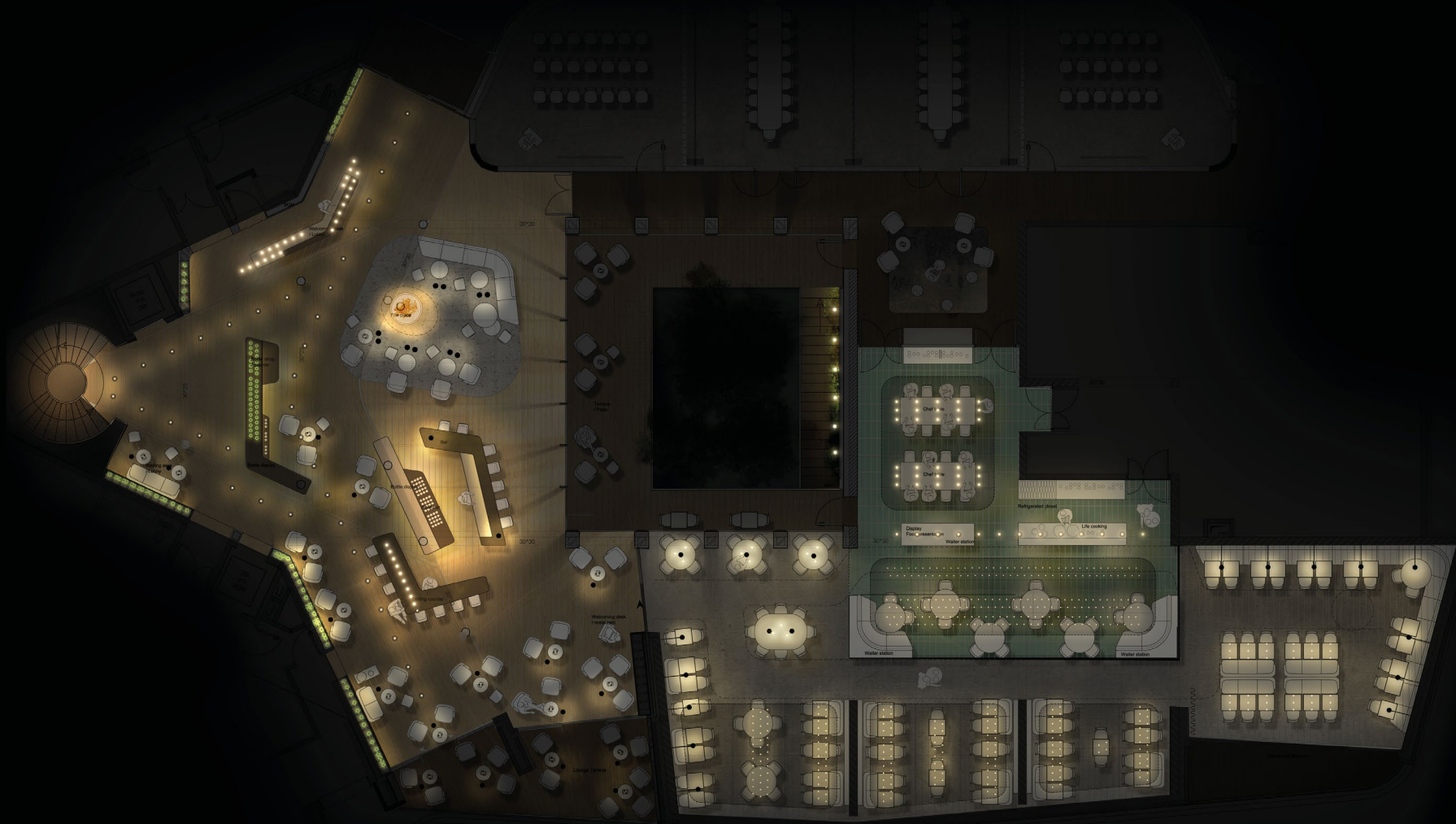
2b. Axes secondaires.

# MUTIGNY HOTEL (2018)

Exterior lighting for Mutigny wine Hotel and restaurant (Champagne, France)

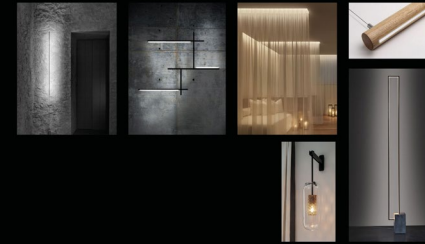
Lighting Project & concept by Agency 8'18" Lumière, Paris.

Digital tools used: Autocad, Photoshop, InDesign.





ECLAIRAGE INDIRECT SUR LE MUR BETON - Eclairage général révélant le béton et jouant avec la transparence des rideaux



LISEUSES - Eclairage latéral du lit - objet de l'ordre du drapé, du pliage



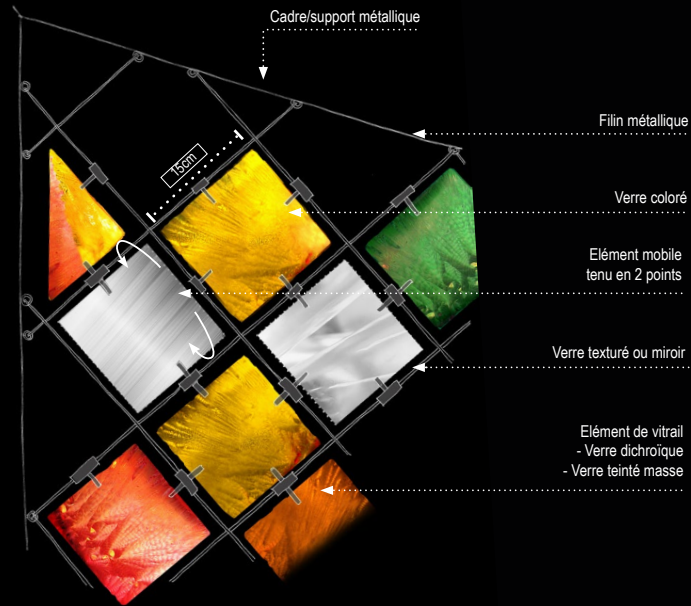


# HAUSSMANN (2018)

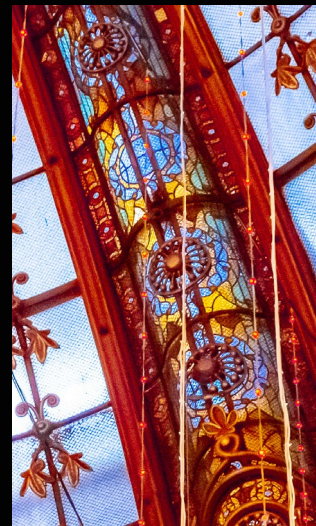
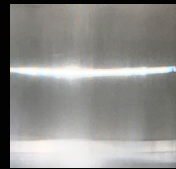
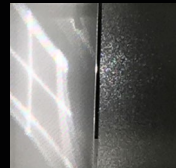
## Exterior lighting for Haussmannian building (Paris, France)

Lighting Project & concept by Agency 8'18" Lumière, Paris.  
Digital tools used: Autocad, Photoshop & physical mock-up.

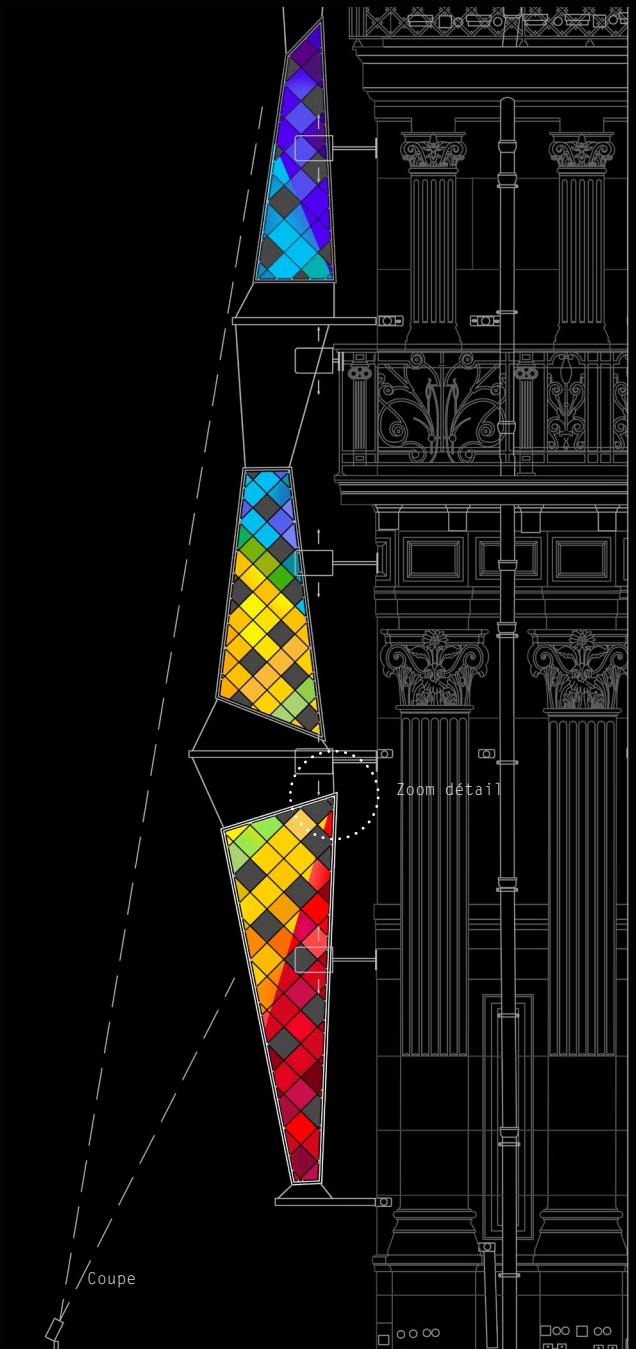
### Le Vitrail Un Echo à la Coupole



Combinaison possible de l'élément en drapeau



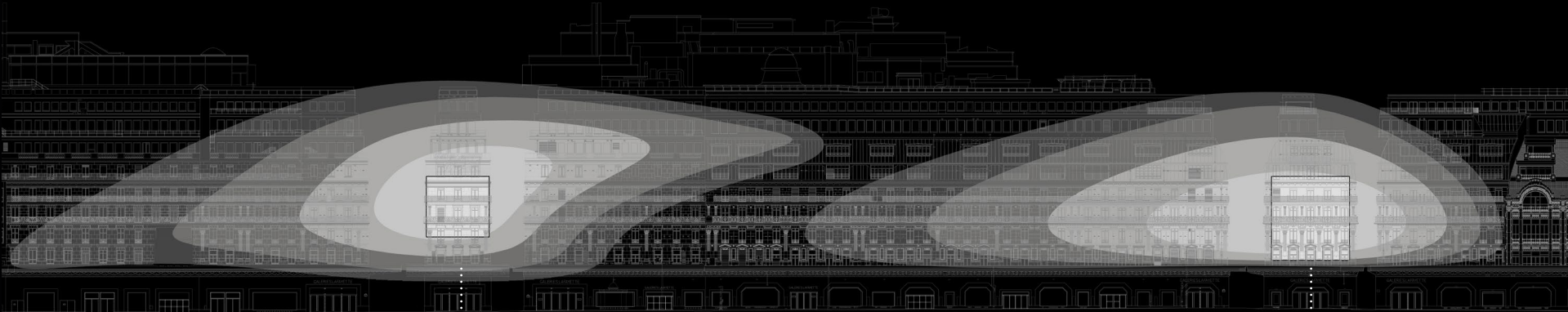
Détail de la coupole existante



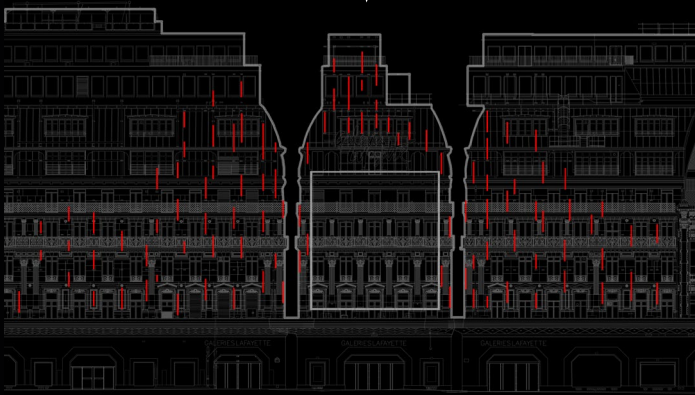
Le Vitrail

Les Entrées comme Origines

Implantation des éléments en verre coloré



Densité de vitraux au plus près des entrées

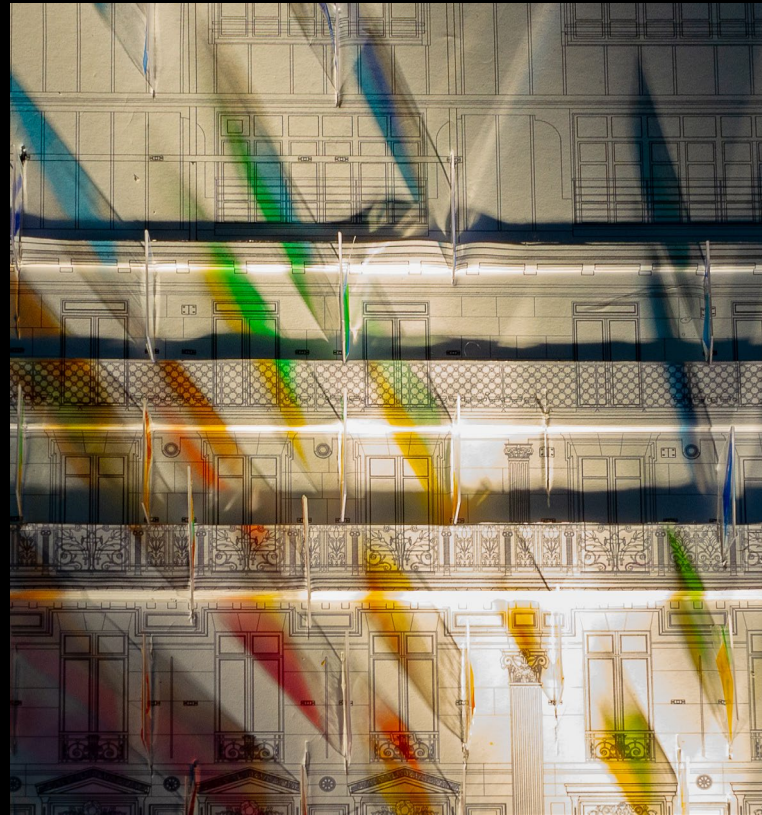


Densité de vitraux au plus près des entrées

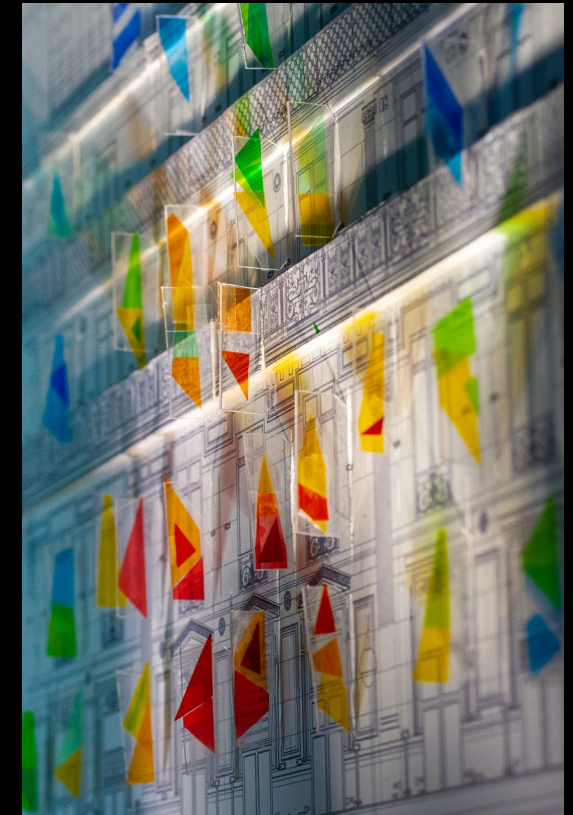
Le Vitrail

Expérimentations //

Maquette réalisée au 1/50ème



Effets Lumière artificielle



Ombres portes colorées

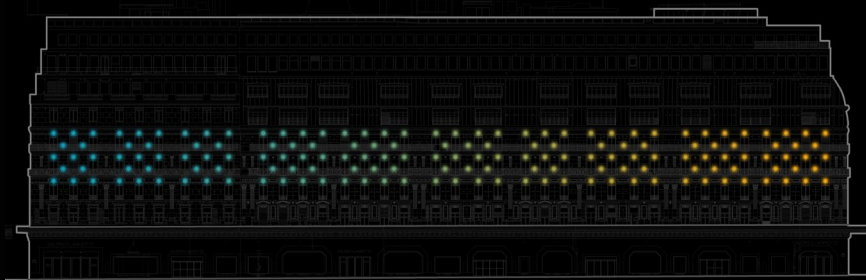


Illustration de la course du soleil sur les vitraux

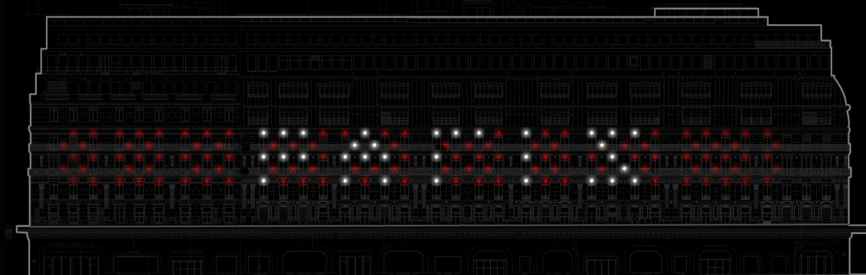
## Les Eclats

Lumière colorée et verre Blanc // Un Objet Communicant

Schémas lumière possibles



Une trame de points RGB programmables

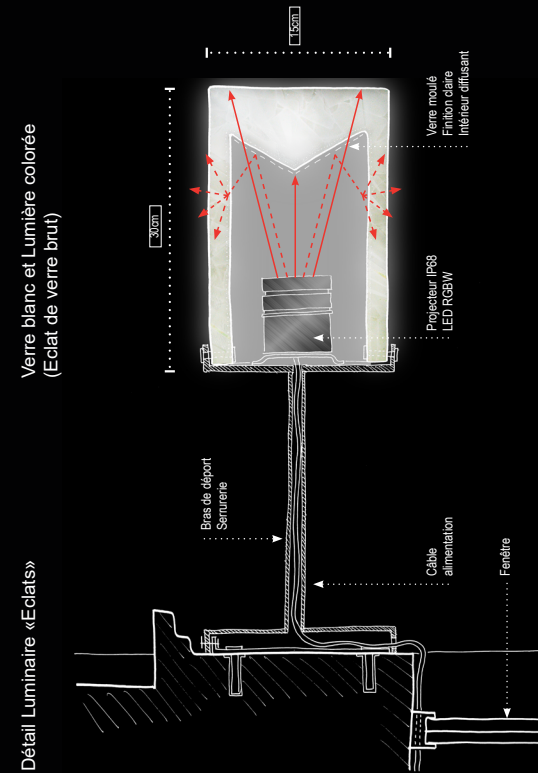


Mouvements et scénarii lumière

## L'Eclat

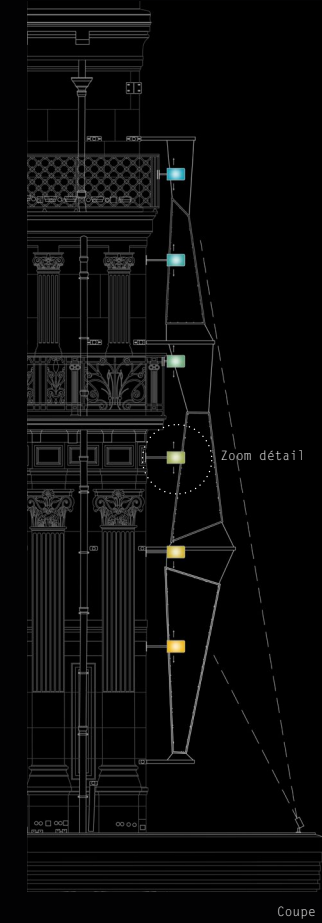
Un Bijou à l'échelle des Façades

Implantation et détail de la trame «Eclats»



Verre blanc et Lumière colorée (Eclat de verre brut)

Détail Luminaire «Eclats»



Elévation et Implantation des «Eclats»

## ARCELOR HEADQUARTERS (2018)

### Atrium lighting for Arcelor Headquarters (Wilmotte & Associes Architectes) (Brussels,Belgium)

Lighting Project & concept by Agency 8'18" Lumière, Paris.

Digital tools used: Autocad, Photoshop, Sketch-up.



Render image by Wilmotte & Associes Architectes)

# OCCITANIE TOWER (2018)

Exterior lighting for Occitane Tower (Toulouse, France)

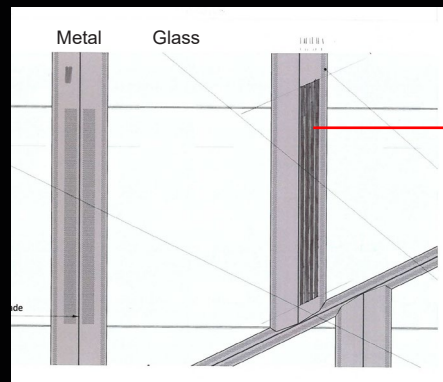
Lighting Project & concept by Agency 8'18" Lumière, Paris.  
Materials research, sketches & physical mock-up for Custom made lighting fixture.



Occitane Tower by STUDIO LIBESKIND

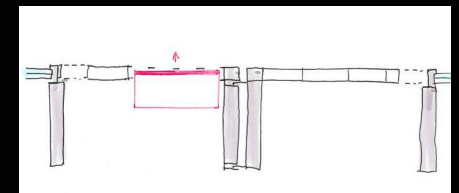
## Lighting design proposal for Facade

Design intention: Lumino kinetic effect, water reflectuion image.  
Lighting fixtures are integrated in the facade construction.



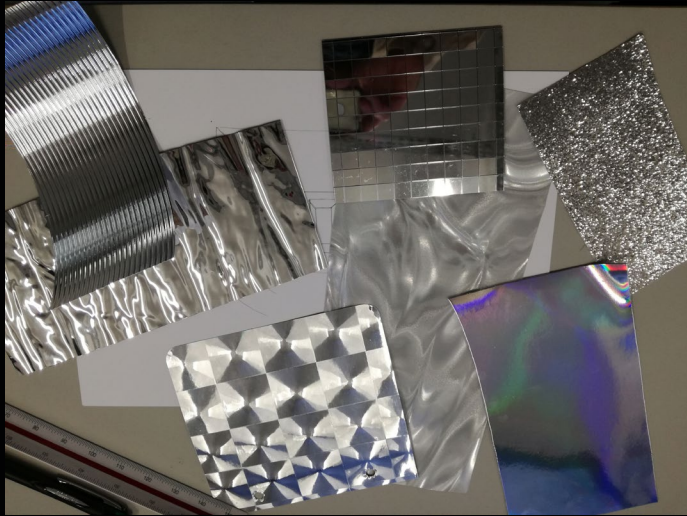
Facade: elevation

The luminaire is behind "cuts"



Facade detail: metal construction, place for luminaire  
Top view

Working on a mock-up



Material research



Experimentation on the light effect



Working process



Detail



Mock-up of the exterior lighting fixture

Personal projects



## Untitled (2019)

Art project Glass Cube organized by Dedicace Gallery (Tbilisi, Georgia)

Material : LED panels, fog machine, metal construction, transparent film.  
Size: 300cm x 300cm x 300cm.



## Contemporary art gallery lighting design (2019)

Client Dedicace Gallery (Tbilisi, Georgia)

Material : Wallwashers, custom made ceiling pendant light, Led linear, custom made decorative lamp.

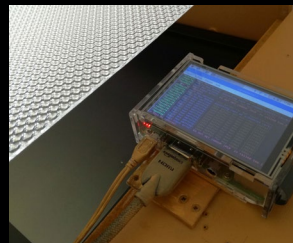
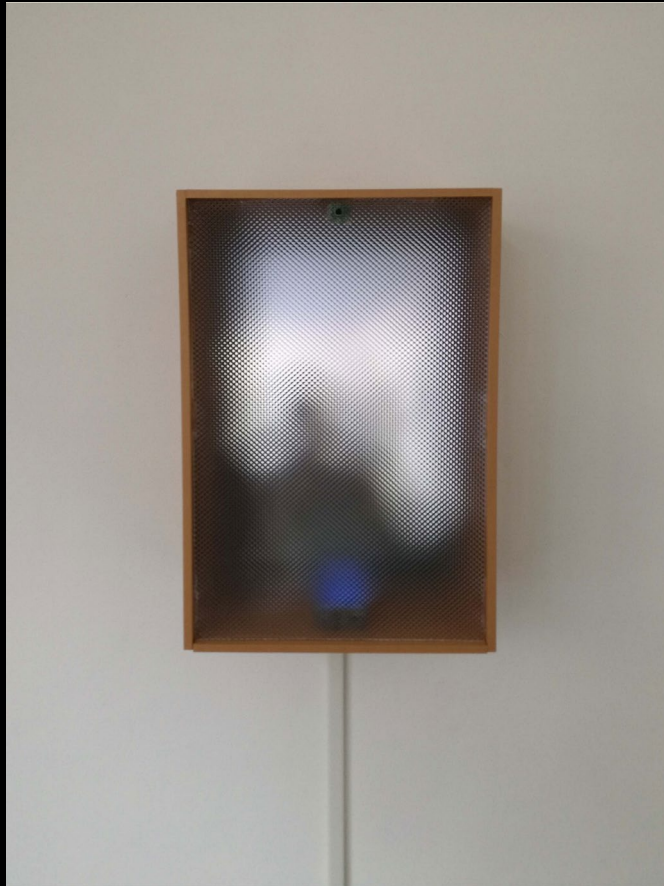


## Untitled (2019)

Interactive light installation. Exhibition Inter-Locution, gallery Glassbox (Paris, France)

Material : Light diffuse filter, computer screen, Raspberry Pi, mini camera, wood.

Size: 60cm x 35cm.



# LAMP DESIGN #1 #2 (2018)

3D max modeling, V-Ray render



TABLE LAMP DESIGN #1 RENDER



FLOOR LAMP DESIGN #1 RENDER



TABLE LAMP DESIGN #2 RENDER

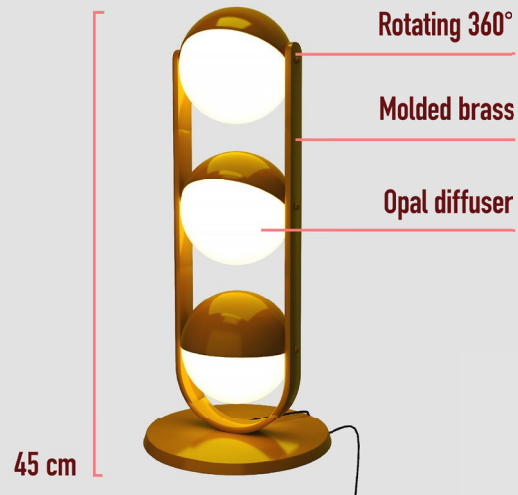


TABLE LAMP DESIGN #1 RENDER

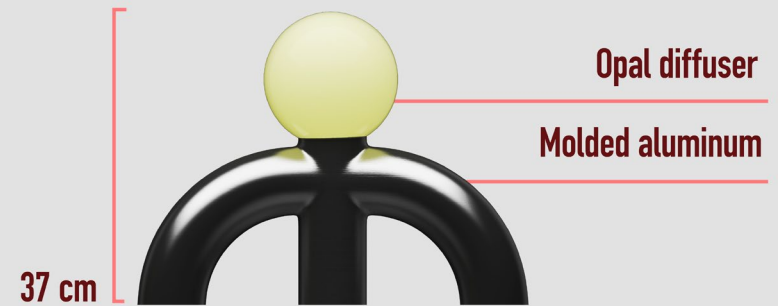


TABLE LAMP DESIGN #2 RENDER

## + - + (Secondary color mixing) (2018)

Material : Neon.  
Size: 150x150cm.



Club Khidi exhibition hall (Tbilisi, Georgia).

## EASY WAY TO DESCRIBE YOUR WORK (2016)

Material : Custom-made LED tubes.  
Size: 120cm x120cm.



*New Constructive Energies - Georgian contemporary art exhibition at Expo Georgia (Tbilisi, Georgia). Curated by Nathalie Hoyos & Rainald Schumacher in collaboration with Irena Popiashvili. Supporting by Goethe Institut in Tbilisi. Courtesy of Irena Popiashvili. Photo@Louisa Chalatahvili*

## STUDY AFTER BACON'S STUDY AFTER VELAZQUEZ'S PORTRAIT OF POPE INNOCENT X (2017)

Material : Chair, satin, LED tubes.  
Size: 110x50x50cm.

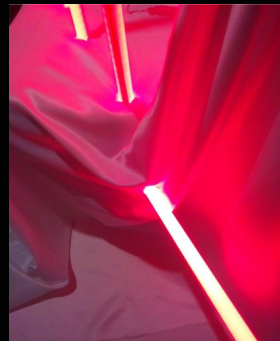


The object is my response to the two works of different epochs. These are Velázquez's Portrait of Innocent X and Bacon's Study after Velázquez's Portrait of Pope Innocent X.

These two works, for me, have always been distinguished by tense, dramatic and apocalyptic moods, and represent a rather masterful reflection of these moods. My study after Velázquez via Bacon's study is three-dimensional and sculptural. In Bacon's study, the face of the character is slowly disappearing, while in my study there is no longer a face. However, a chair remains as a symbol of power and legitimacy.

Despite the fact that new epochs bring innovations, the symbols of power – regardless of the faces being changed or entirely disappeared- remain permanent.

Exhibition // Artisterium's 10th International Exhibition of Contemporary Art- Georgian National Museum "Karvasla" (Tbilisi, Georgia). Photo@Sandro Losaberidze



## PENDANT CEILING LIGHTING (2017)

Concept store "Flying Painter" (Tbilisi, Georgia)

Material : Iron, LED panel.

Size: Variable.

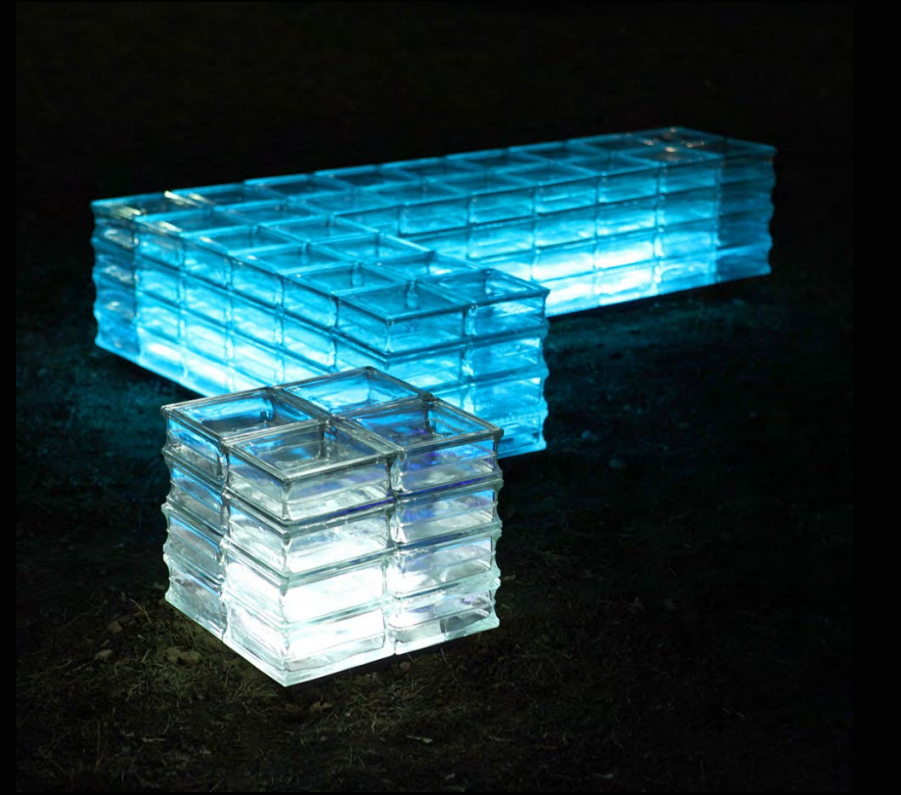


Photo @ Sandro Losaberidze

## IN-LIGHT CHAIRS (2017)

In-Light Chairs were created for New Year celebration in Deda Ena park by support of Artarea-Gallery and Tbilisi City Hall (Tbilisi, Georgia).

*Material : Glass brick, Led flex strip.*  
*Size: Height 38cm.*



*Photo @ Levan Maisuradze*



## TUBE LAMPS (2016 -2019)

Material : Painted polypropylene tubes, LED, plexy glass diffuser.  
Size: Height 30cm, Height 165cm.

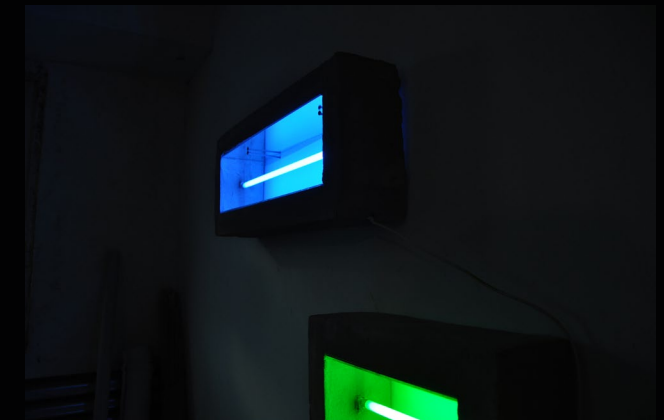
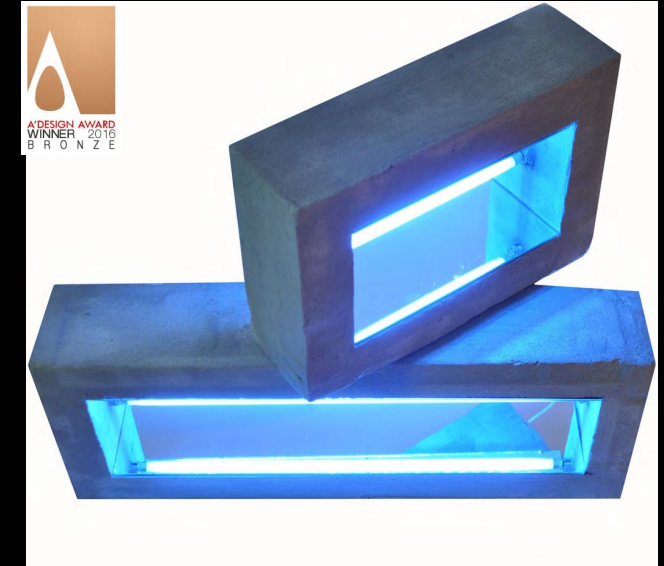
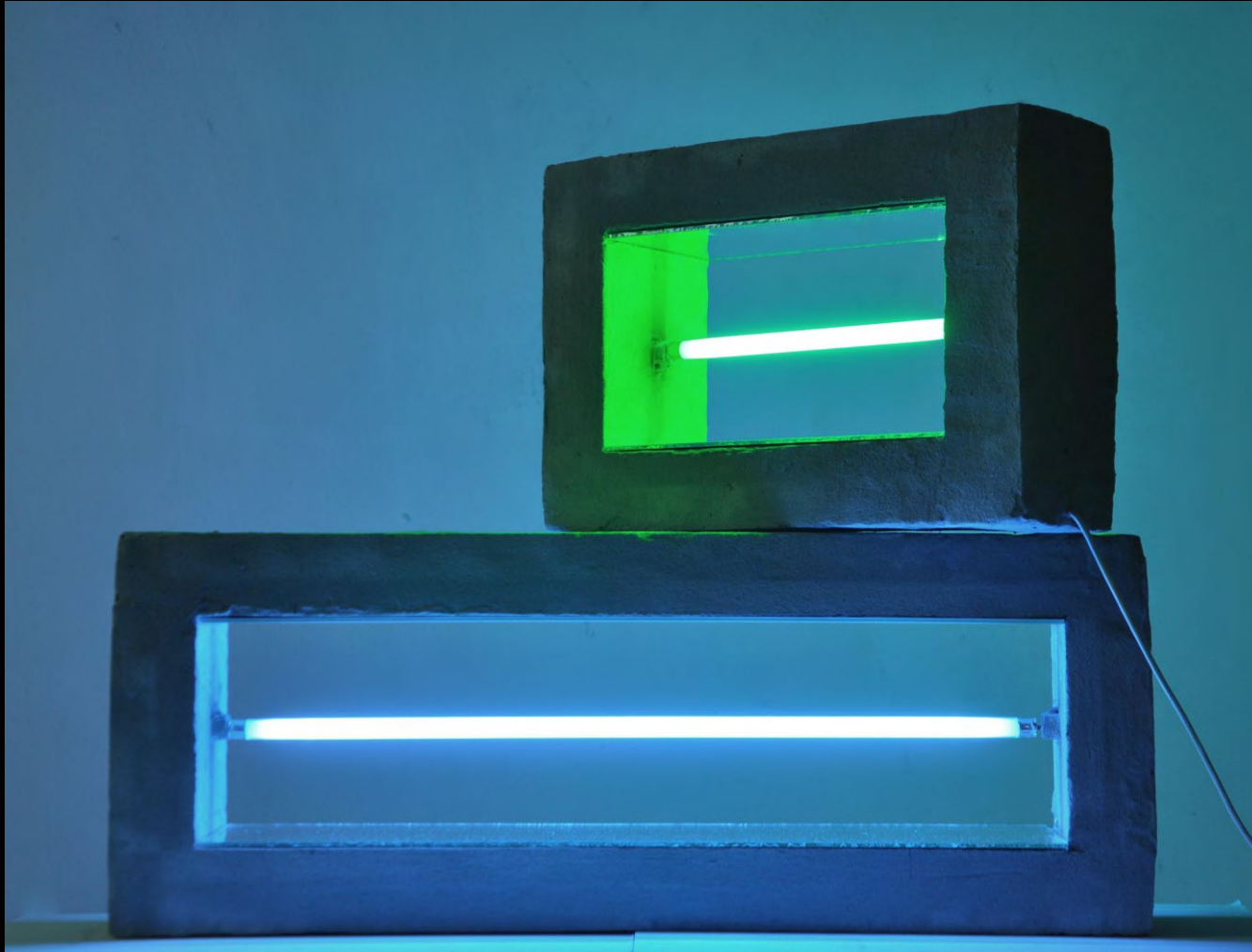


Photo @ Sandro Losaberidze

## SHELFLAMP (2015)

Bronze A' Design Award Winner in Lighting Products and Lighting Projects Design category, 2015-2016.

Material: Concrete, mirror, fluorescent lamp.  
Size: 35x20x11 cm; 65x20x11cm.



 Bronze A' Design Award Winner  
in Lighting Products and Lighting Projects Design Category, 2015 - 2016.

ShelfLamp  
by Giorgi Maghradze

Lamp and shelf : Multifunctional Shelflamp can be used as a floor or table based or as a wall lighting. If used as a shelf there may be placed various interior objects like plants, vessel, books etc. Those two pieces may be arranged in diverse combinations towards each other and towards the space. The mirror between the light source and inside walls creates the illusion of deep inner space due to the mirror reflections. Although concrete is quite heavy material, this work is rather light and comfortable to move.

Photo @ Sandro Losaberidze

## NEON HEATER (2015)

For Popiashvili Gvaberidze Window Project

Material: Ceramic electric heaters, neon lights.  
Size: 50cmx50cm.



Photo@ Nana Giglemiani

Courtesy of Irena Popiashvili



Popiashvili Gvaberidze Window Project opened its third location in Tbilisi at the Café Iveria on Republic Square.

*"Giorgi Magradze's Neon Heater is a diptych of squares composed from ceramic tops of conventional electric heaters. The artist inserted green and blue neon lights in the circular and rectangular creases of the ceramic surface transforming electric stove top into minimalistic objects with colored neon scribbles on them". (Excerpt from an exhibition press release)*

## WALL LAMPS (2015)

*Material: Various recycled materials.*



Projects during master studies at Politecnico di Milano

# LIGHTING FOR EXTERIORS (2018)

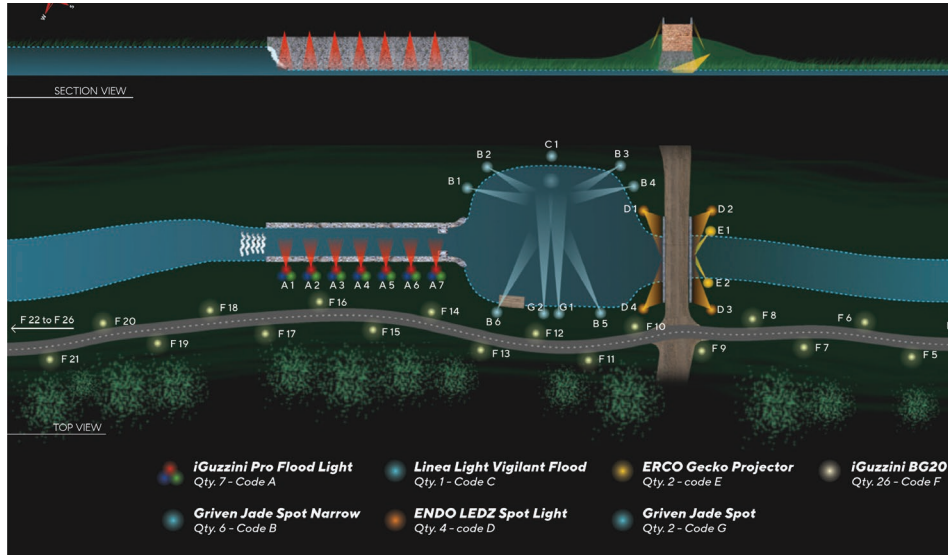
Bridge and basin over the Naviglio Canal (Lombardy).

In collaboration with U.Chiuini Garcia & P. Kanwar Singh.

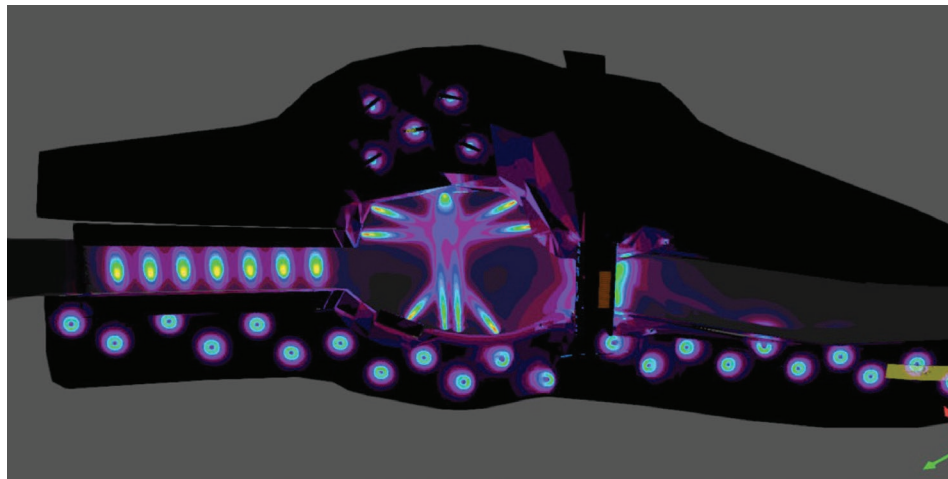
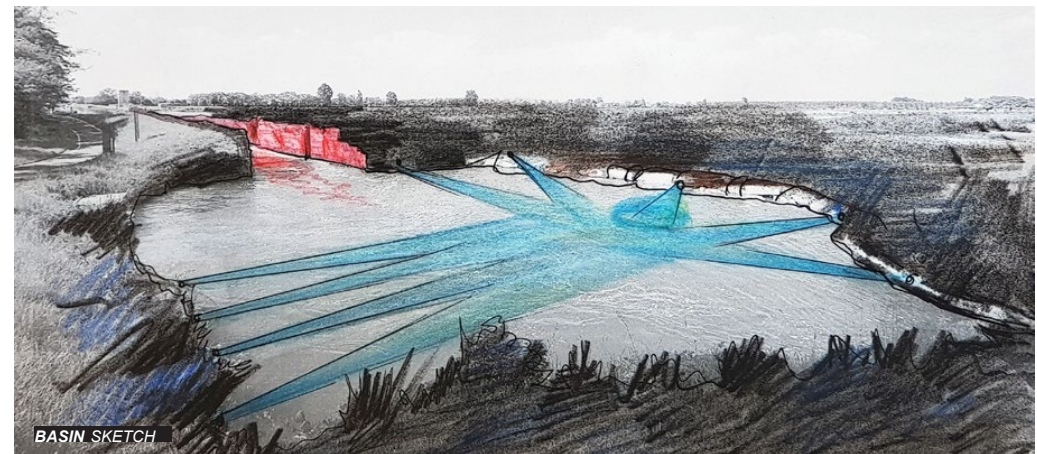
Project work in the frame of the Politecnico Di Milano master program in Lighting Design & LED Technology.  
Supervising by Piero Castiglioni & Susanna Antico.

## THE BASIN

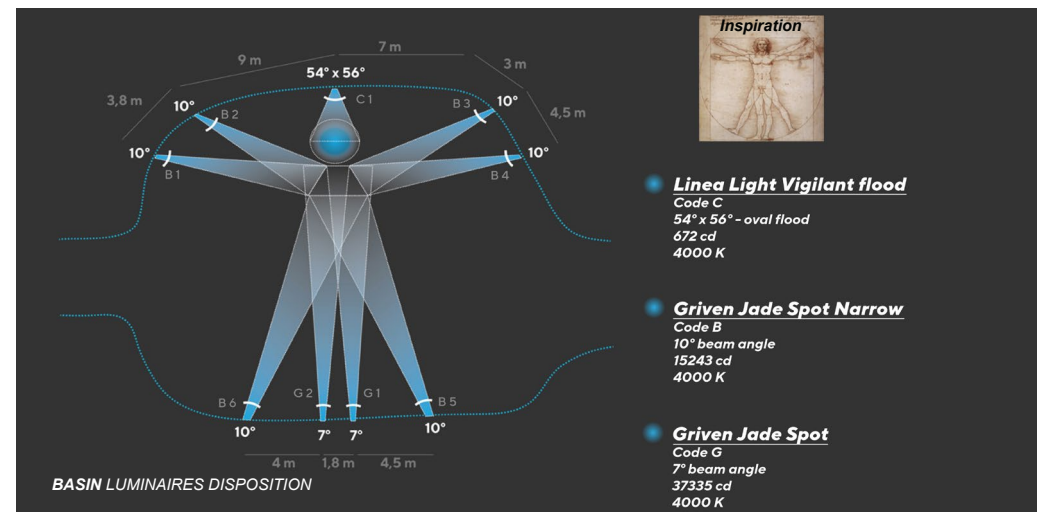
### GENERAL PLAN



GENERAL PLAN LUMINAIRES DISPOSITION



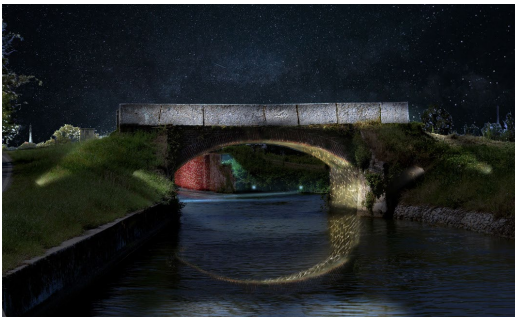
GENERAL PLAN DIALUX CALCULATION



# THE BRIDGE



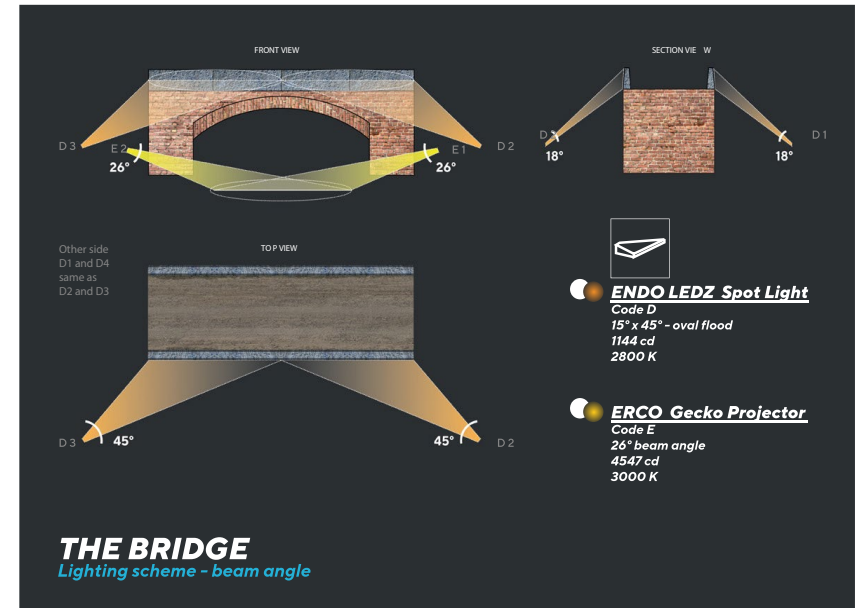
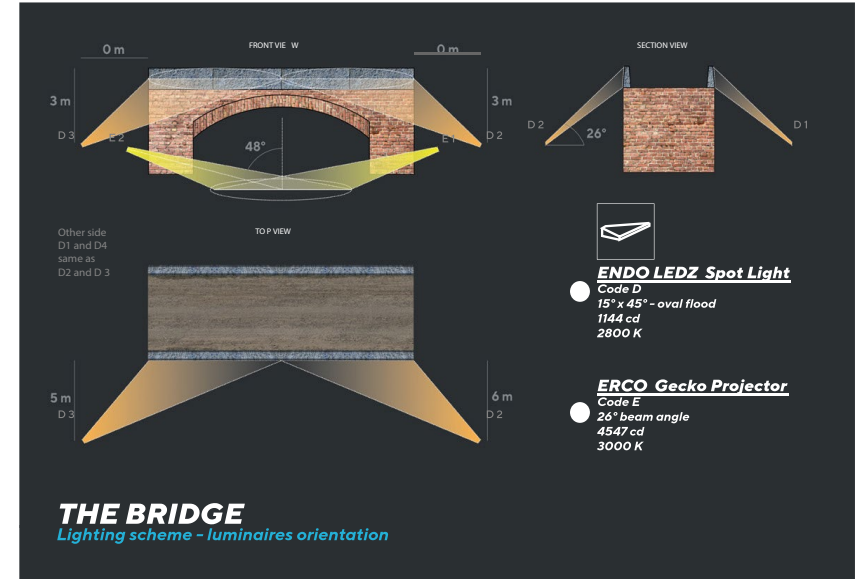
BRIDGE SITE PHOTO



BRIDGE RENDER



BRIDGE SKETCH

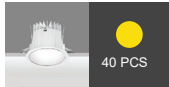


# LIGHTING FOR HOSPITALITY (2018)

## Alp & Wellness Mota Hotel. Restaurant lighting (Italian Alps)

In collaboration with U.Chiuini Garcia & P. Kanwar Singh.  
 Project work in the frame of the Politecnico Di Milano master program in Lighting Design & LED Technology.  
 Supervising by Chiara Bertolaja and Laura Bellia.

### ACCENT LIGHTING

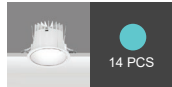


40 PCS

#### iGuzzini MV94

Beam angle: 24°  
 Total lighting output: 1093 lm  
 Color temperature: DALI  
 CRI: 90

### AMBIENT LIGHTING

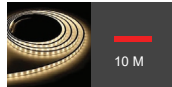


14 PCS

#### iGuzzini MV91

Beam angle: 44°  
 Total lighting output: 1109 lm  
 Color temperature: DALI  
 CRI: 80

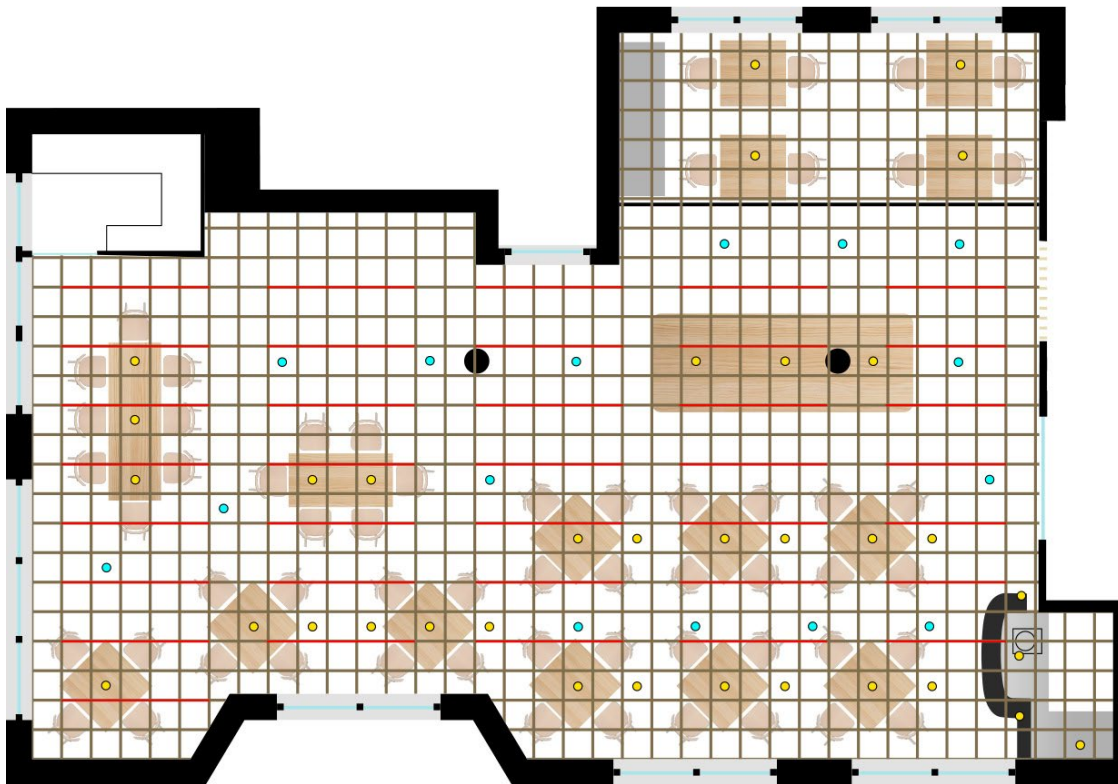
### AMBIENT LIGHTING



10 M

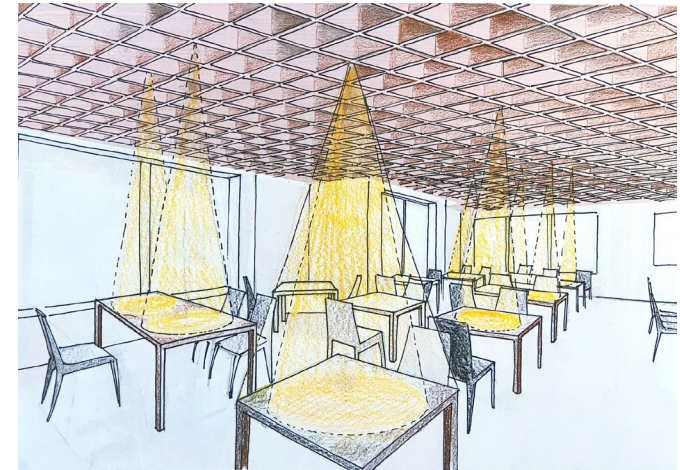
#### PROLED Flexstrip 300

Beam angle: 120°  
 Light Intensity: 400 lm/m  
 Color temperature: 3000 K



GENERAL PLAN CEILING LUMINAIRE DISPOSITION

## LIGHTING DESIGN CONCEPT



RESTAURANT SKETCH



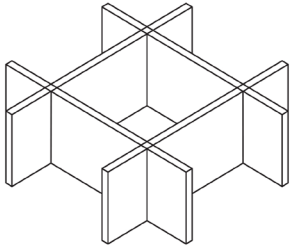
RESTAURANT SIDE VIEW SKETCH



RESTAURANT INTERIOR PALETTE

RESTAURANT MOODBOARD





We want to create the feeling of a cozy and friendly place, with the use of local materials to give a sensation of natural and warm areas, as properly can be found in the outside.

By creating wooden grid false ceiling we want to avoid glare and create ceiling lighting which is easily adjustable according to table positioning.



RESTAURANT GOALS AND DESIGN PROPOSAL



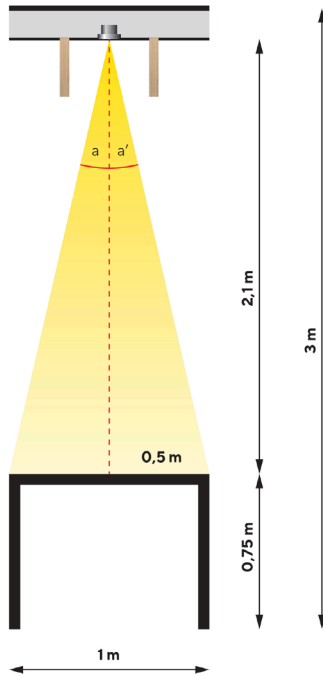
RESTAURANT DIALUX RENDER

Beam angle:

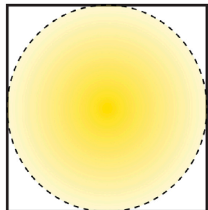
$$d = 2,1 + 0,5 = 2,158 \text{ m}$$

$$a = \arcsin\left(\frac{2,158}{2,1}\right) = 13^\circ$$

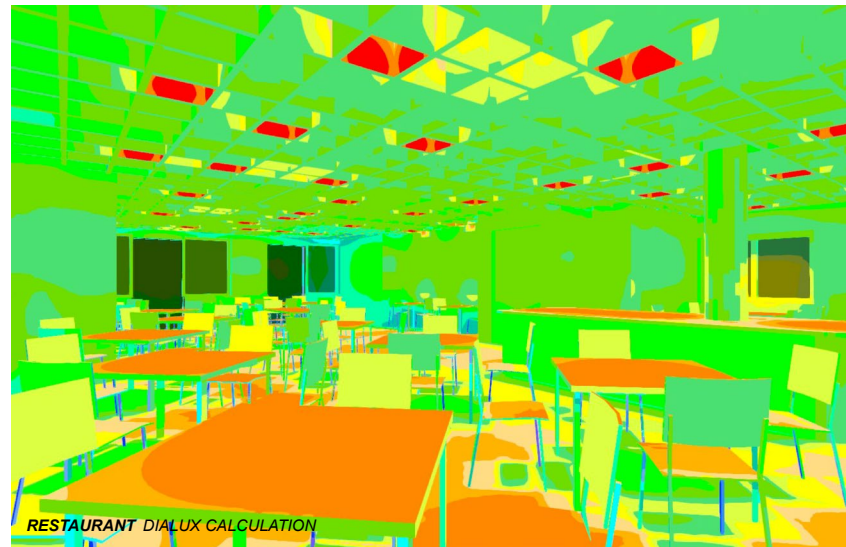
$$\text{beam angle: } 13^\circ \times 2 = 26^\circ$$



Square table 1 x 1 m



RESTAURANT BEAM ANGLE CALCULATION FOR ACCENT LIGHTING OVER THE TABLES



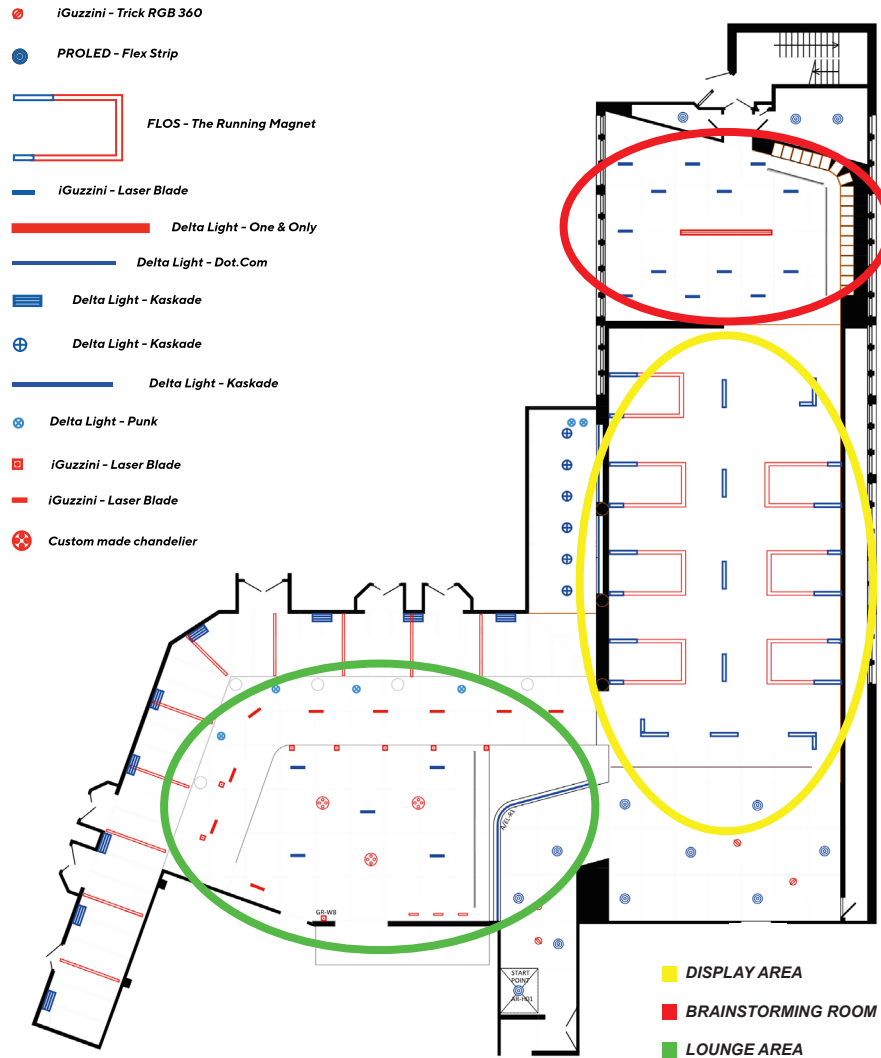
RESTAURANT DIALUX CALCULATION



# LIGHTING FOR COMMERCIAL SPACES (2018)

## 3M Showroom (Sweden)

In collaboration with U.Chiuini Garcia & P. Kanwar Singh.  
Project work in the frame of the Politecnico Di Milano master program in Lighting Design & LED Technology.  
Supervising by Carlo D'Alesio and Piero Santoro.



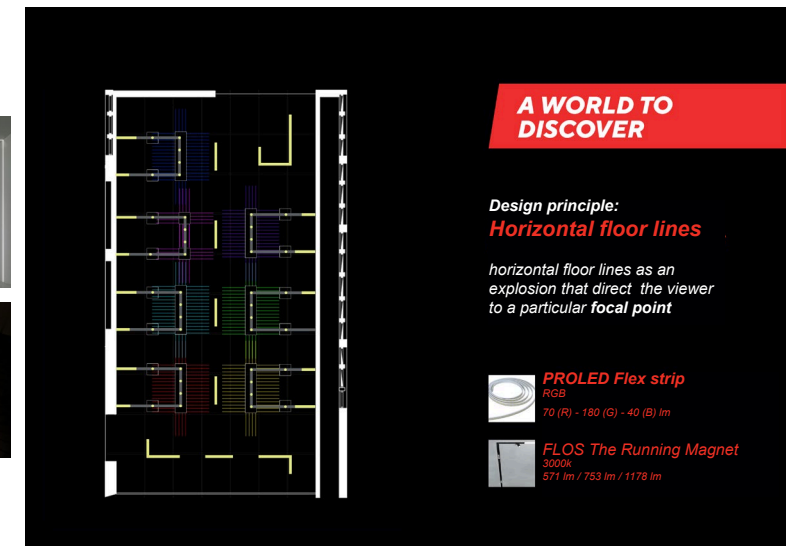
GENERAL PLAN LUMINAIRES DISPOSITION

## DISPLAY AREA



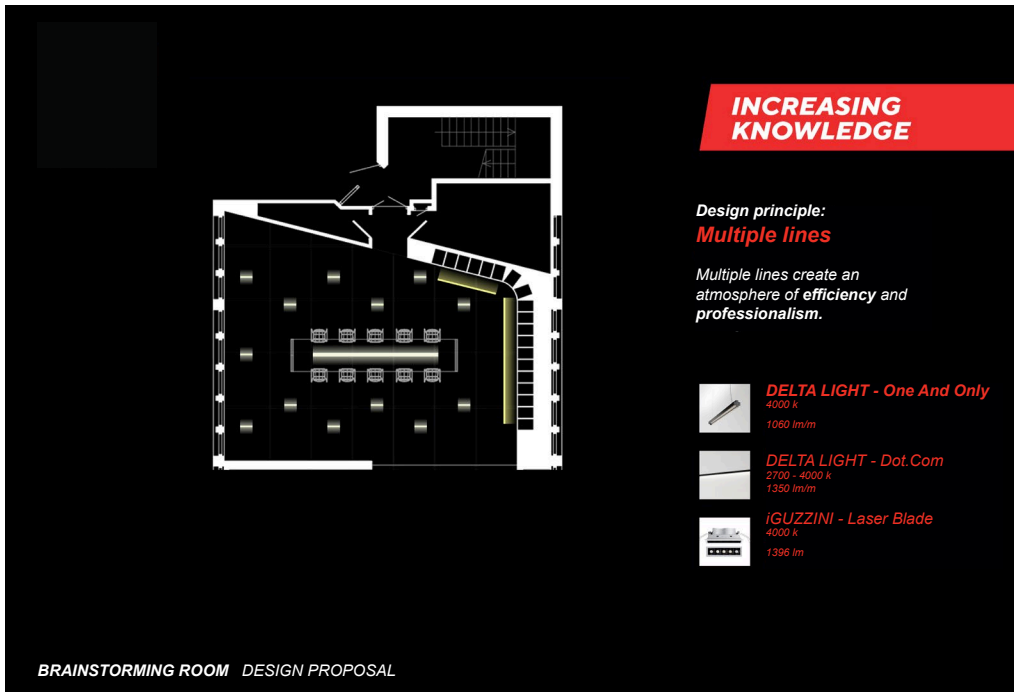
DISPLAY AREA RENDER

## MOODBOARD

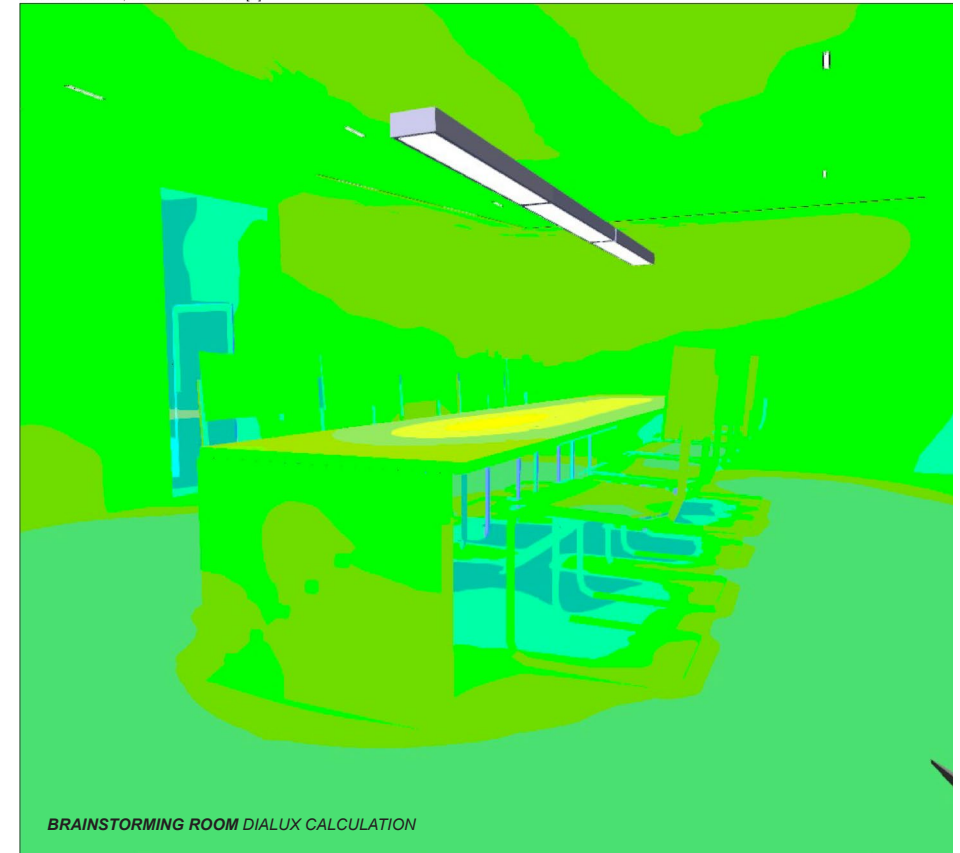


DISPLAY AREA DESIGN PROPOSAL

## BRAINSTORMING ROOM



BRAINSTORMING, Illuminance values in [lx]



# LOUNGE AREA



**RELAX AND TALK  
IN A COZY AREA**

**Design principle:**  
**Vertical lines**

Vertical lines are seen as tall and represent **gradeur**.

**Custom Chandelier**  
3000 k  
25 LED - 80 lm each

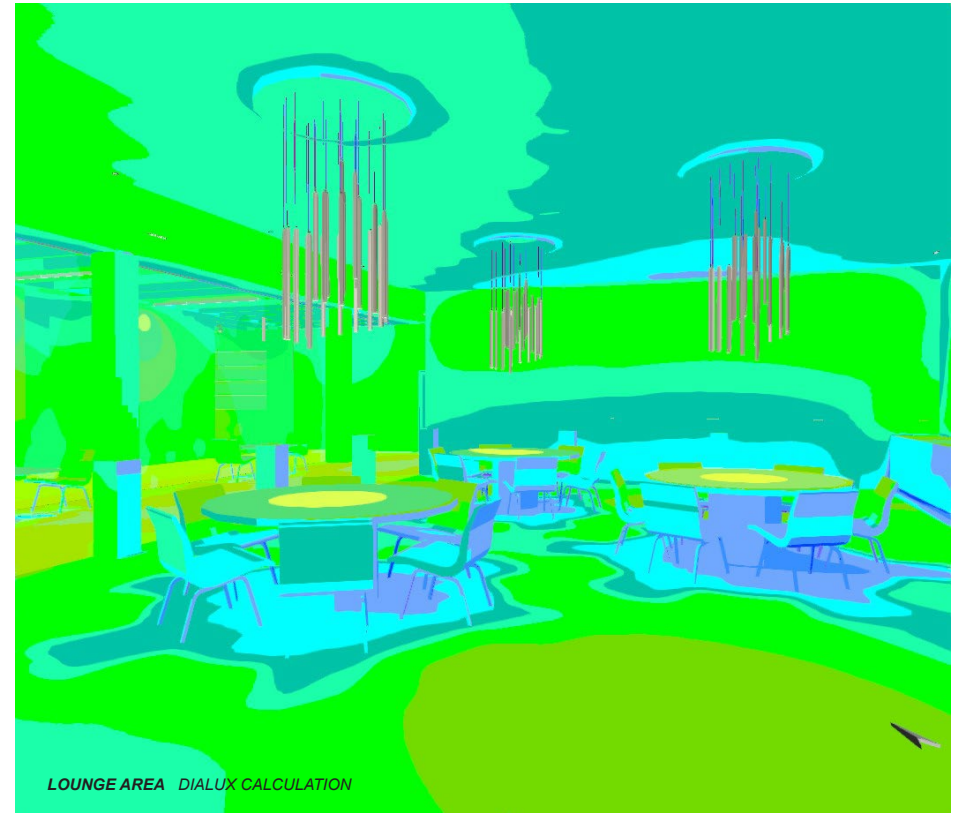
**DELTA LIGHT - Punk**  
3000 k  
488 lm

**iGGUZINI - Laser Blade**  
4000 k  
157 lm

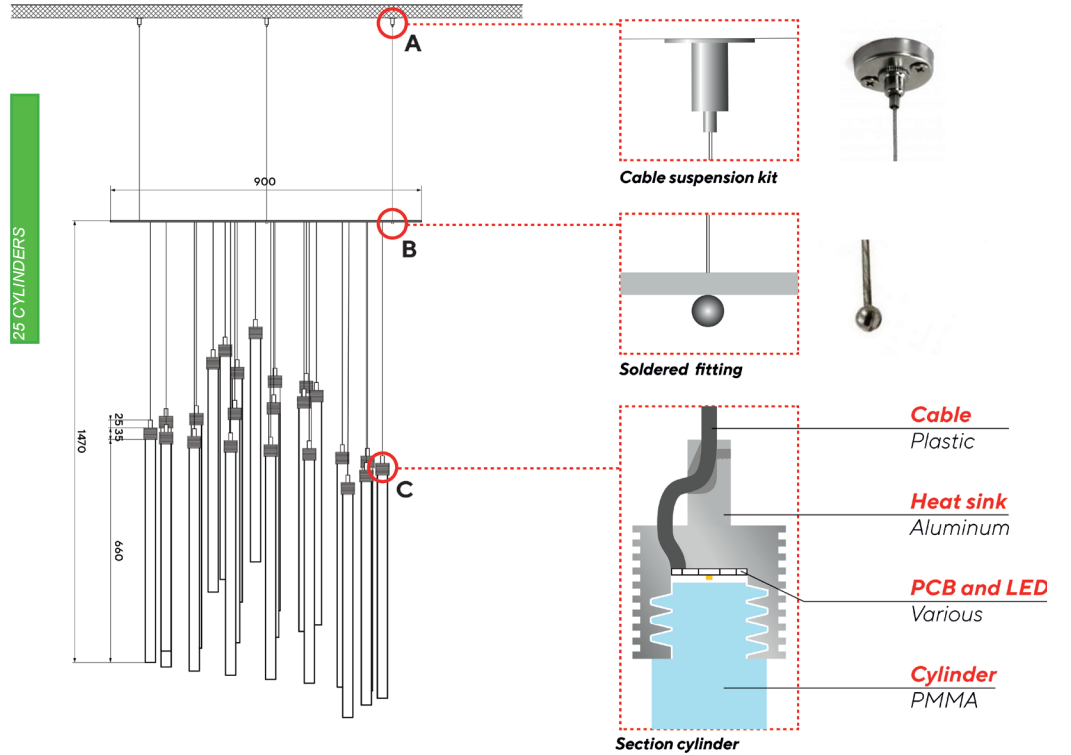
**iGGUZINI - Laser Blade**  
3000 k  
1450 lm

**DELTA LIGHT - Dot.Com**  
2700 - 4000 k  
1350 lm/m

LOUNGE AREA DESIGN PROPOSAL



# CUSTOM-MADE CHANDELIER FOR LOUNGE

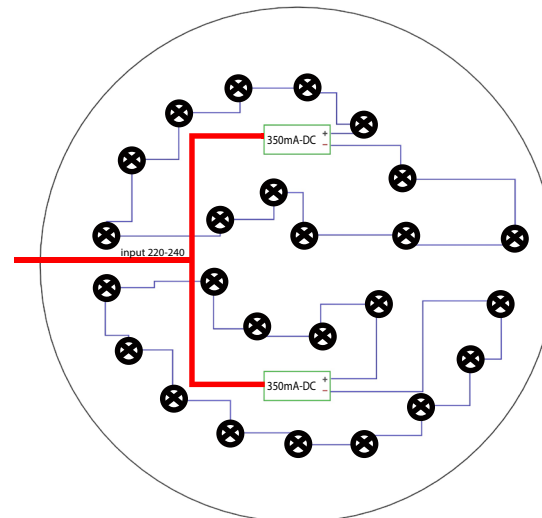


CUSTOM-MADE CHANDELIER MOUNTING DETAILS

table, illuminance values in [lx]



**CUSTOM MADE LUMINAIRE CALCULATION SURFACE: Perpendicular illuminance (Grid)**  
**Light scene: june 9**  
 Average: 407 lx, Min: 283 lx, Max: 579 lx, Min/average: 0.70, Min/max: 0.49  
 Height: 0.667 m



CUSTOM-MADE CHANDELIER ELECTRICAL DETAIL

- LED MODULE**  
LUMILEDS LUXEON Z ES - 350mA  
-Luminous flux: 105 lm  
-Luminous efficacy: 110 lm/W  
-Part number: LXZ2-3C90-x
- DRIVER**  
DELTA LIGHT POWER SUPPLY  
350mA-DC / 18W DIM8  
-Dimming by phase cut-off dimmer on mains (10-100%).  
-Output: 250mA-DC/18W/25-51V-DC